



GMT MONTHLY MEMBERSHIP PROGRESS REPORT

Results as of: 1/31/2017

Multiple District 5

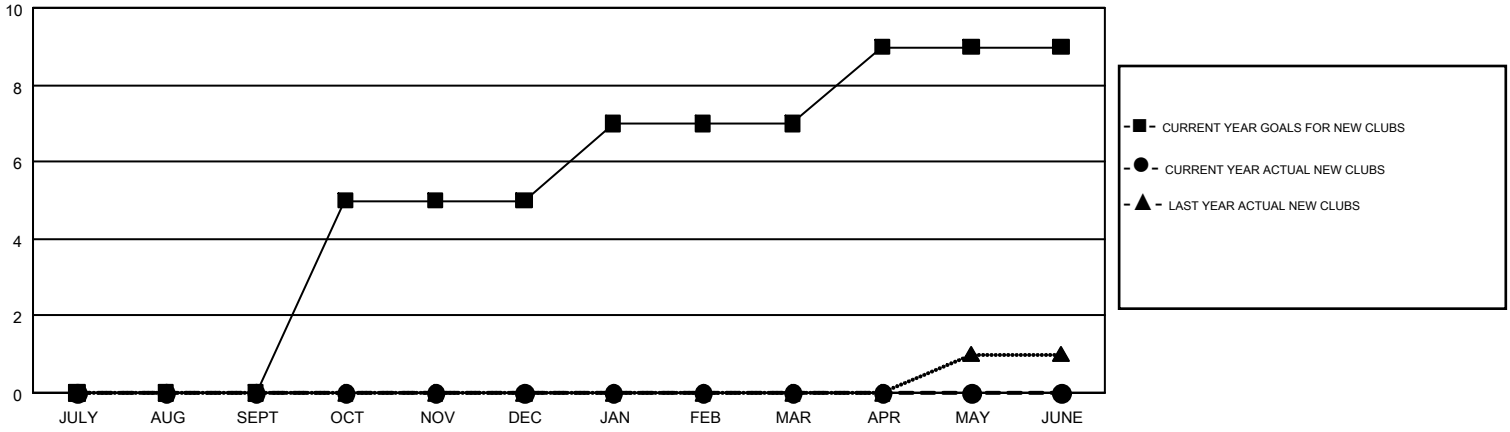
LOCATION: NORTH DAKOTA

GMT: DENNIS STEVENSON, JUDY HANKOM

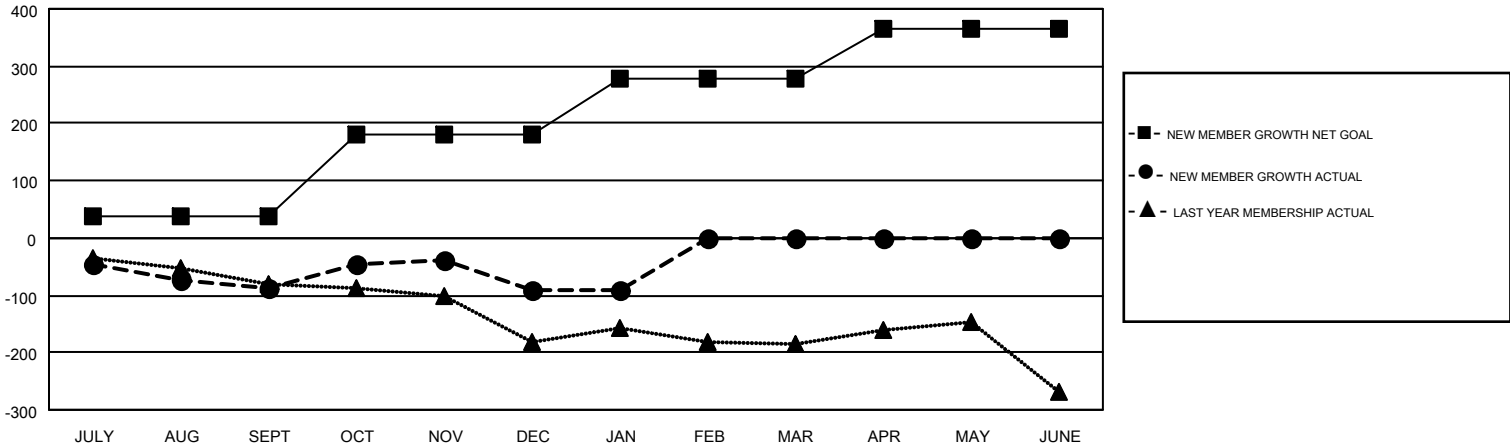
GMT CA NA

| Clubs | | | | Members | | | |
|-----------------------|---------------|-----------|---------------|-----------------------|--|--|--|
| RESULTS FOR 2016-2017 | | | | RESULTS FOR 2016-2017 | | | |
| QUARTER | NEW CLUB GOAL | NEW CLUBS | DROPPED CLUBS | QUARTER | NEW MEMBER GROWTH NET GOAL (not reinstated or transfers) | NEW MEMBER GROWTH ACTUAL (not reinstated or transfers) | DROPPED MEMBERS ACTUAL (including transfers) |
| JULY/AUG/SEPT | 0 | 0 | 4 | JULY/AUG/SEPT | 37 | 93 | 179 |
| OCT/NOV/DEC | 5 | 0 | 1 | OCT/NOV/DEC | 143 | 199 | 203 |
| JAN/FEB/MAR | 2 | 0 | 0 | JAN/FEB/MAR | 98 | 75 | 77 |
| APR/MAY/JUNE | 2 | 0 | 0 | APR/MAY/JUNE | 88 | 0 | 0 |

GOALS AND ACTUAL NEW CLUBS CUMULATIVE



GOALS AND ACTUAL MEMBERS CUMULATIVE



| | | |
|---|---|--|
| DROPPED CLUBS: 5 | 148 CLUBS OF 324 ADDED 1 OR MORE NEW MEMBERS | GENDER DISTRIBUTION MALE 5,604 (73.65%) FEMALE 2,005 (26.35%) |
| DROPPED MEMBERS DECEASED 62 CLUB CANCELLED 32 OTHER 365 TOTAL 459 | CLICK HERE FOR CUMULATIVE MEMBERSHIP DATA | TOTAL FAMILY UNIT MEMBERS 1,145 FAMILY MEMBERS PAYING HALF DUES 578 |